



**CLIMB ON**

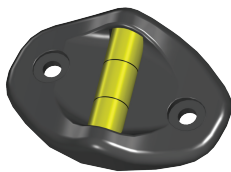
# CLIMBING ANGLE BUBBLE LEVEL REPLACEMENT

READ THESE INSTRUCTIONS COMPLETELY BEFORE YOU START. IF YOU DON'T UNDERSTAND THESE INSTRUCTIONS, PLEASE CALL 800-453-1192 FOR ASSISTANCE

Procedure for replacing the Climbing Angle Bubble Level on Little Giant Ladder Systems **HYPERLITE™** and **HYPERLITE™ SUMOSTANCE®** ladders.

1. Failure to comply with all instructions may result in serious injury.
2. Make sure this kit is compatible with your ladder. Before installing this kit, identify all kit components. If any components are missing, damaged or if you have any questions concerning the use of this kit on Little Giant Ladder Systems products, please contact our Customer Experience Team at 800-453-1192. Do not substitute any components.
3. Inspect the ladder before installing this kit. Repair or replace any damaged or missing parts before using the ladder. Use only Little Giant Ladder Systems repair or replacement parts. If you are unable to repair it, discard the ladder.

## COMPONENTS IN KIT



(1) BUBBLE LEVEL ASSEMBLY



(2) SOCKET CAP SCREWS



(2) WASHERS



(2) CENTER LOCK NUTS

## TOOLS NEEDED

DRILL WITH  
3/16" DRILL BIT



HAMMER



3/16" PUNCH



3/8" WRENCH

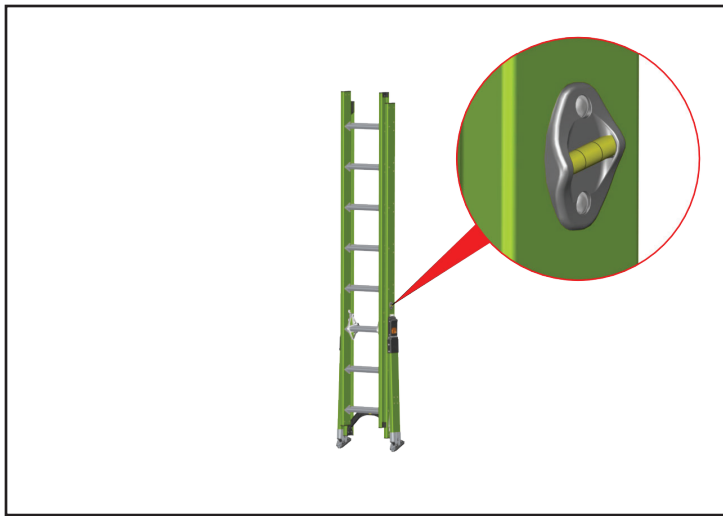


1/8" ALLEN  
WRENCH

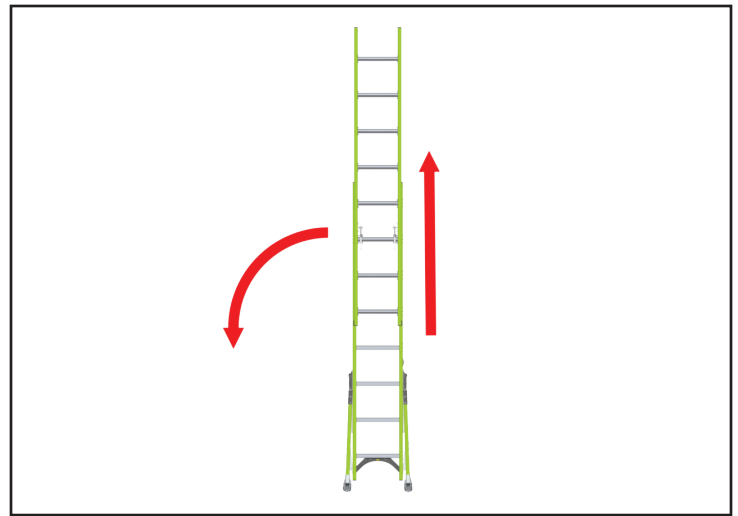


NOTE: IF ANY OTHER PART OF THE LADDER IS DAMAGED BEFORE OR DURING THE PROCESS OF INSTALLING AND/OR REPAIRING, PLEASE CONTACT OUR CUSTOMER EXPERIENCE TEAM FOR ASSISTANCE AT 800-453-1192.

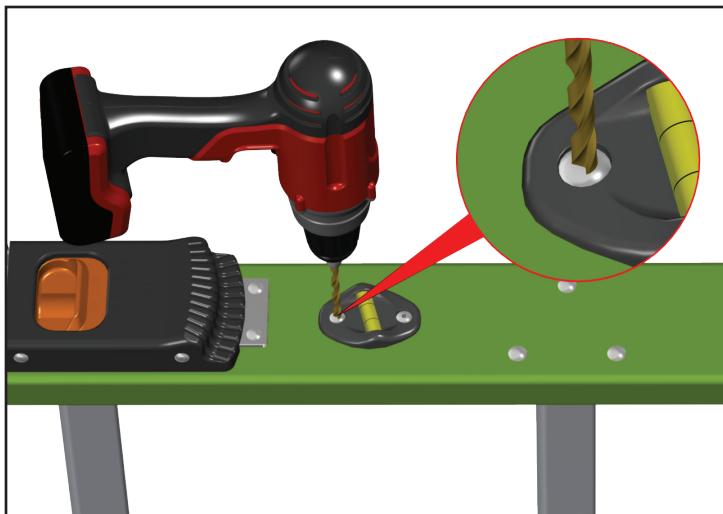
**DO NOT USE A DAMAGED LADDER!**



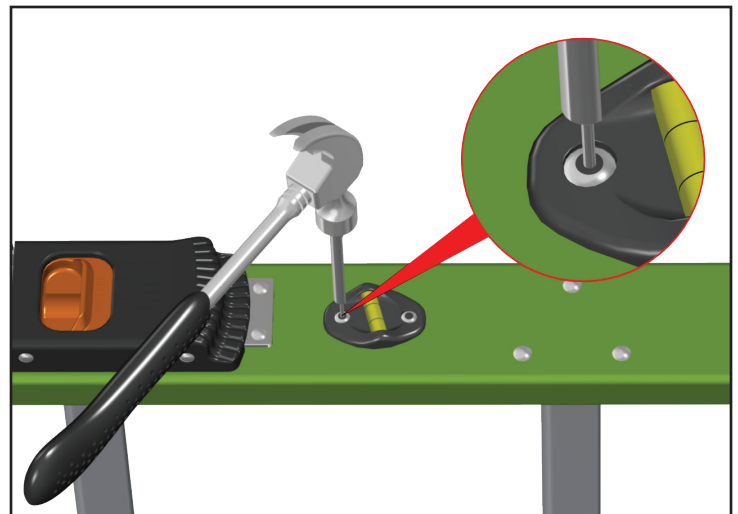
1. Identify the bubble level assembly being replaced.



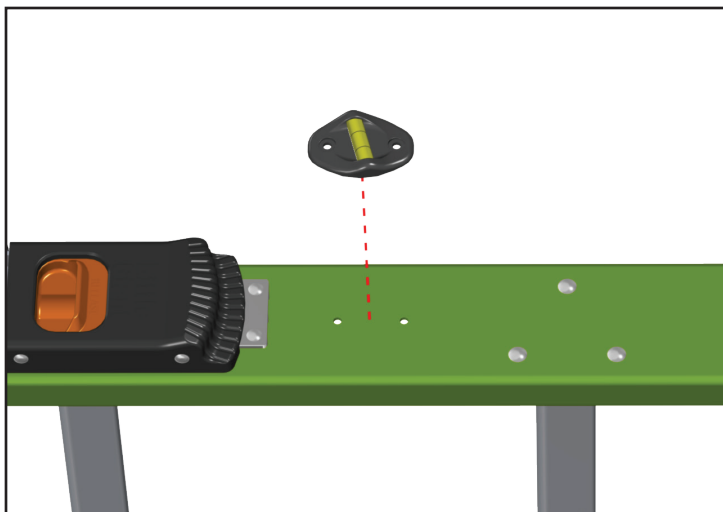
2. Extend the fly section four rungs, then lay the ladder on its side with the bubble level facing up.



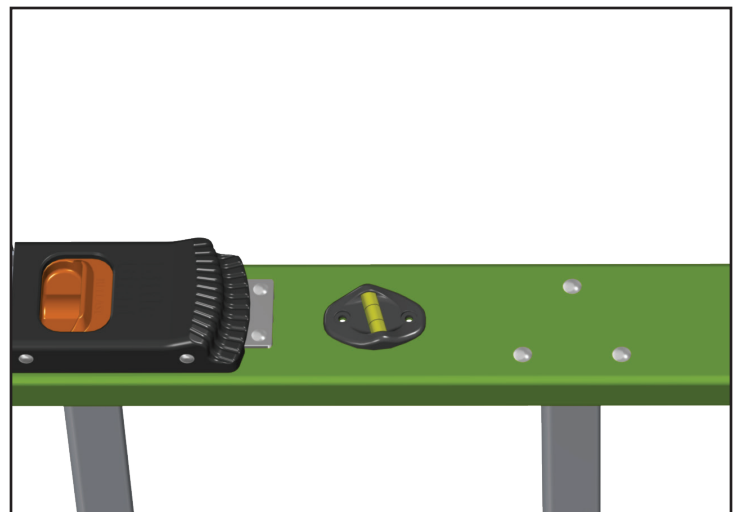
3. Using a 3/16" bit, drill through both rivet heads on the bubble level, but make sure not to drill into the fiberglass rail.



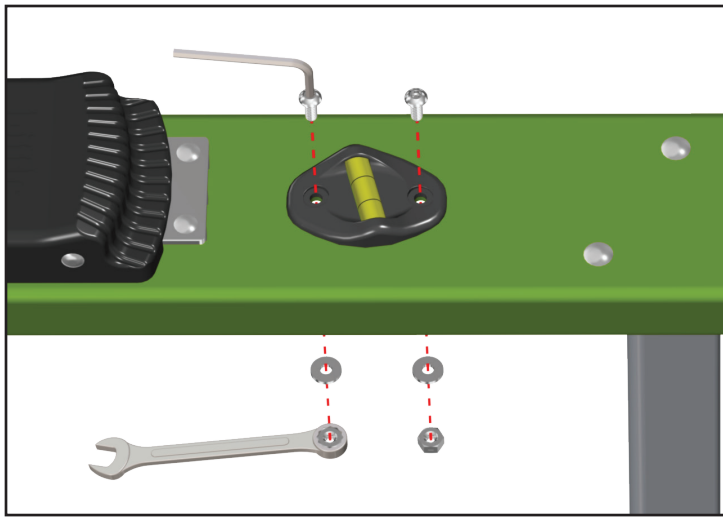
4. Using a hammer and 3/16" punch, remove the rivets from the rail.



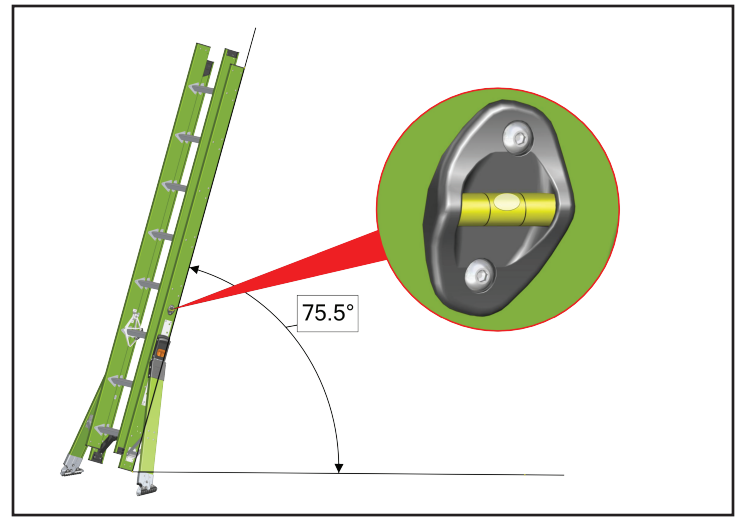
5. Remove and discard the old bubble level assembly



6. Align the new bubble level on the right side of the ladder.



7. With a 1/8" Allen wrench and 3/8" wrench, tighten the new fasteners in the order shown.



8. Confirm bubble level is functioning properly before use.